



DOUBLETREE  
by Hilton™

PUTRAJAYA LAKESIDE



# DOUBLETREE BY HILTON PUTRAJAYA LAKESIDE

An iconic landmark sitting on the shores of Putrajaya Lake and the pre-eminent full service hotel in the city, with a brand new facelift, DoubleTree by Hilton Putrajaya Lakeside introduces 10 spacious contemporary room categories with its distinctive touch. Keeping true to our heritage roots, our feature restaurant, Makan Kitchen pays homage to authentic local delicacies creating Malaysian favourites.

With a selection of pools & recreation areas you can soak in the stylish Lakeside Pool overlooking the picturesque Putrajaya Lake, children can have endless fun at our mini water theme park – Splash Pool or adults can enjoy a dip in our Rooftop Pool catching up on peace and tranquil time.

A wonderland for MICE planners, the hotel features 22 diverse event space made perfect for breakout session plus a brand new Grand Ballroom enhanced with LED screen and an open air multifunctional space best suited for social or teambuilding desires.

Through endless enjoyment and discovery, a day is never enough at DoubleTree by Hilton Putrajaya Lakeside, the ideal destination to strike the perfect balance between business and relaxation.

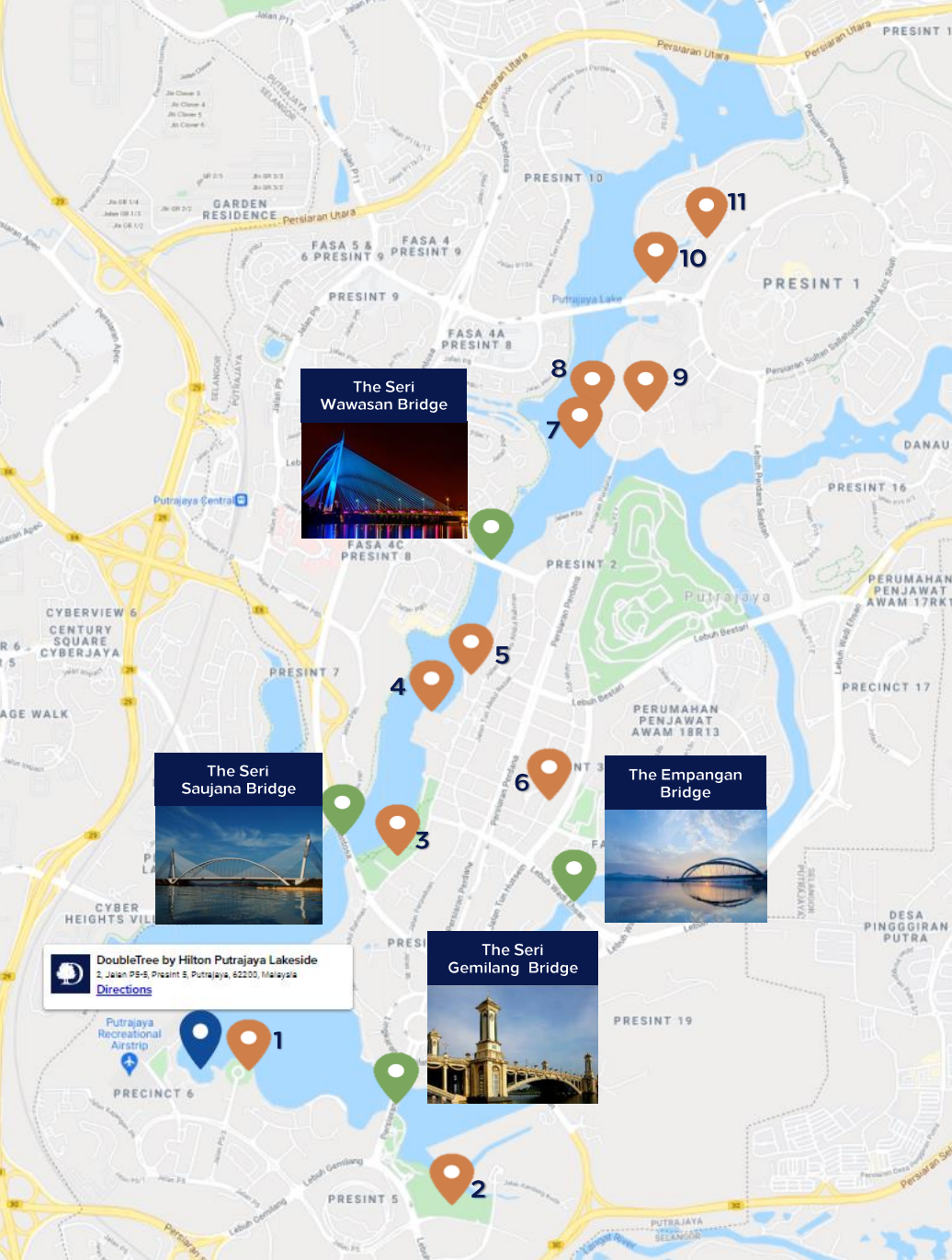


# LOCATION MAP



- From Presint 2 via Persiaran Perdana  
Average 5km ; 9 minutes
- From Cyberjaya via Jalan Teknokrat 6  
Average 6.4 km ; 9 minutes
- From Kuala Lumpur International Airport  
Average 24km ; 21 minutes
- From Kuala Lumpur City Centre via SMART Highway  
Average 37km ; 33 minutes
- From Petaling Jaya via Lebuhraya Damansara-Puchong Highway  
Average 40km ; 35 minutes
- From Seremban via North-South Highway  
Average 50km ; 38 minutes

*Our hotel is 15 minutes from Putra Perdana, and 20 minutes from Kuala Lumpur International Airport. We are within 20 kilometers of Putrajaya Botanical Garden, and IOI City Mall.*



# ATTRACTIONS



# ICONIC BRIDGES



# HOTEL

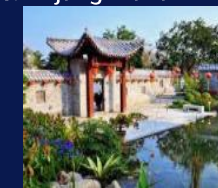
1. Marina Putrajaya Water Sports Complex



2. Putrajaya Dam



3. Anjung Floria



4. Iron Mosque



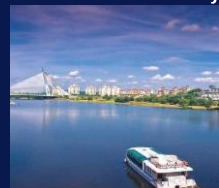
5. Millennium Monument



6. Palace of Justice



7. Cruise Tasik Putrajaya



8. Pink Mosque



9. Dataran Putrajaya



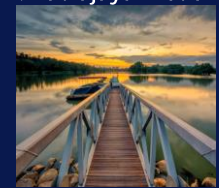
10. Moroccan Pavilion



11. Putrajaya Botanical Garden



12. Putrajaya Wetlands Park

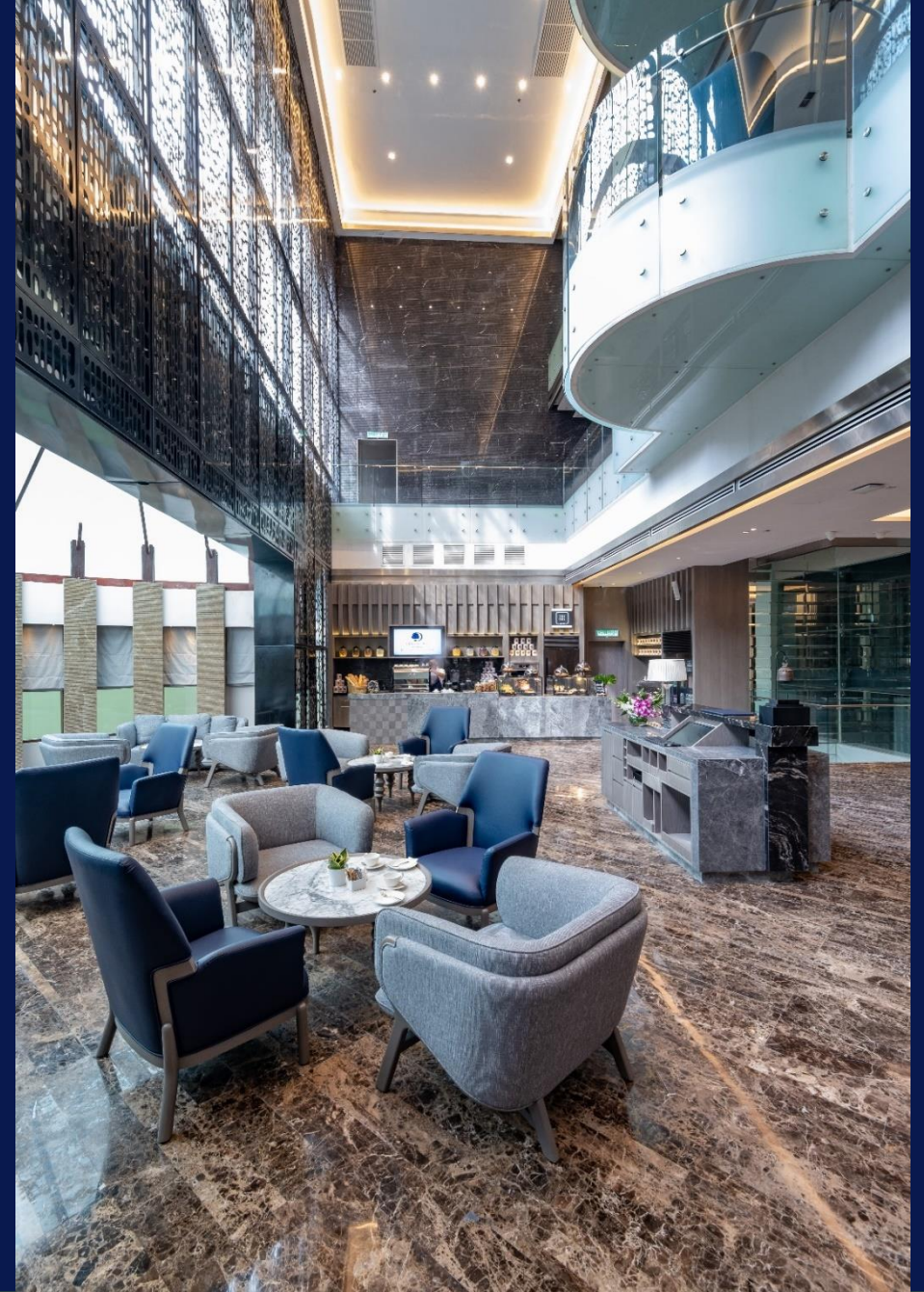


13. Putrajaya Equestrian Park



# WHY DOUBLETREE BY HILTON PUTRAJAYA LAKESIDE?

- Less than 20 minutes to Kuala Lumpur International Airport
- 290 rooms and 10 contemporary room categories to choose from.
- 22 diverse event space and a brand new Grand Ballroom enhanced with LED screen.
- Temenggor, an open air multifunctional space best suited for social or teambuilding desires.
- Splash Pool – all day fun water park specially designed for children.
- Spectacular view overseeing the Putrajaya Lakeside in the day and sunset.
- Putrajaya's jogging track and man-made beach within hotel vicinity.



# ABOUT ACCOMMODATION

ROOM TYPE	TOTAL	KING	TWIN	AVERAGE SIZE (SQM)
GUEST ROOM	165	60	105	31
DELUXE ROOM	43	29	14	37
FAMILY ROOM	18	18	-	61
EXECUTIVE ROOM	25	23	2	47
EXECUTIVE LAKEVIEW ROOM	16	15	1	41
DELUXE SUITE	10	10	-	76
KING LAKE VIEW SUITE	4	4	-	76
2 BED ROOM SUITE	4	4	-	115
PRESIDENTIAL VILLA	1	1	-	230
ACCESSIBLE ROOM	4	4	-	35
	<b>290</b>	<b>168</b>	<b>122</b>	

- DoubleTree by Hilton Putrajaya Lakeside has ten (10) room categories
- In-house guest parking is at MYR 5.00net per car per entry
- Check-in time is 15:00hrs; Check-out time is 12:00hrs
- Connecting rooms and Hollywood twin rooms are available

# GUEST, DELUXE & EXECUTIVE ROOM



- King & Twin rooms : from 31 – 47 sqm
- 49" IPTV with multiple TV channels
- Ergonomic work spaces
- Walk in rain & handheld shower
- High ceiling rooms
- Smart power control system
- Connecting rooms & Hollywood twin bed available
- Coffee & tea making facilities, WIFI, safety box, MP3 docking system and USB ports
- Balcony for Deluxe & Executive rooms

# EXECUTIVE LAKE VIEW ROOM



- King & Twin rooms : average 41sqm
- 49" IPTV with multiple TV channels
- Ergonomic work spaces & armchair
- Walk in rain & handheld shower
- High ceiling rooms
- Balcony with Present view for Executive Rooms
- Balcony with Putrajaya lake view for Executive Lake View Rooms
- Smart power control system
- Coffee & tea making facilities, WIFI, safety box, MP3 docking system and USB ports



# DELUXE SUITE & KING LAKE VIEW SUITE



- King & Twin rooms : average 76sqm
- 55" IPTV with multiple TV channels
- Exquisite panorama living room with sofa bed
- Separate bathtub and walk-in rain shower
- High ceiling rooms
- Balcony with Putrajaya lake view for King Lake View Suite
- Balcony with Presint view for Deluxe Suite
- Smart power control system
- Separate ergonomic work space
- Coffee & tea making facilities, WIFI, safety box, MP3 docking system and USB ports



# SPLASH POOL

In the centre of the 4-winged hotel sits the colourful **SPLASH POOL** where children under the age of 15 can have endless fun at this mini water park. Comprising 3 zones catered to the young ones of different ages :-

- Toddler Splash Pool
- Kids Aqua
- Teens Thrill

Children are sure to have a blast at the mini water park, where they can feel the gush of water pouring down from a mega bucket, or get their adrenaline pumping at the 1-storey-high, 360-degree water slide. Located at Wing 5, Ground Floor.

Operational hour

10:00hrs to 13:00hrs

14:00hrs to 18:00hrs

# MAKAN KITCHEN



**Makan Kitchen** is the hotel's featured signature restaurant which offers inspired selection including local specialties and western favorites for 300 guests including a private dining room. Breakfast, lunch and dinner is prepared in an open kitchen with live cooking stations, showcasing local delicacies of the Malaysian heritage cuisines (Indian, Chinese and Malay) and modern western dishes. Located at Wing 5, Level 1.

## Operational Hour

Breakfast : 06:30hrs – 10:30hrs  
Lunch : 12:00hrs – 14:30hrs  
Dinner : 18:30hrs – 22:00hrs  
In-Room Service : 24hours

# THE KOFFEE



The Koffee ideally located on the Lobby Level, a practical grab-and-go store that serves varieties of sandwiches and baked pastries. With its contemporary daylight design and whilst listening to the soothing soft tunes or just enjoying a cuppa, The Koffee will definitely help you to unwind and relax after a hard day's work. DoubleTree's famous Chocolate Chips cookie and DoubleTree Putrajaya's signature Bunga Telang Pavlova are the main features.

Operational Hour : 09:00hrs till 21:00hrs.

# EXECUTIVE LOUNGE



Exclusively for Executive, Suite or HiltonHonors Diamond members, guest can spend their day catching up on work or simply enjoy the quiet ambience and panoramic present view. The decorations in Executive Lounge are Asian influence, the rattan baskets are hand painted by local artist. Located at Wing 1, Ground Floor.

Operational hour : 07:00hrs till 21:00hrs

# CONFERENCE VENUE

## GROUP, MEETINGS & EVENTS

Being in the vicinity of Malaysia's federal administrative centre, DoubleTree by Hilton Putrajaya Lakeside is also the ideal venue for various functions and events, both corporate and intimate. Spanning over a total of 3,773 square meters event space, the hotel has 22 meeting rooms which are name after Lakes in Malaysia, all rooms are outfitted with an LCD projector, Wi-Fi and wired internet, video and teleconferencing facilities, digital sound system as well as an Event Manager to provide any technical support required.

A wonderland for MICE planners, the diverse event space made perfect for breakout session plus a brand new Grand Ballroom enhanced with LED screen and an open air multifunctional space best suited for social or teambuilding desires.

## WEDDINGS & SOCIAL EVENTS

As for weddings, couples have a choice of hosting their reception in an indoor or outdoor setting. The pillarless Grand Ballroom is designed to fit up to 400 guests, which can also be partitioned into two smaller rooms for more intimate ceremonies. While the Temenggong, an open air amphitheater offers an amazing view of the southern end of Putrajaya lake, this 900sqm space could be the preferred choice for weddings and outdoor social events.



# HYBRID MEETINGS



Featuring a dedicated seamless green studio with the latest technology and a bespoke backdrop that has the ability to shoot where you want, when you want and expanding infinite possibilities. Located at Puteri 1 - Wing 2 at Ground Floor.

## What's Included:

- Green Screen
- LED Screen
- Studio Lighting
- HD Cameras
- Teleprompter
- Presenter Timer
- Livestream Software
- High Speed Internet
- Customize Virtual Background



# FUNCTION ROOMS





# TEMENGGOR

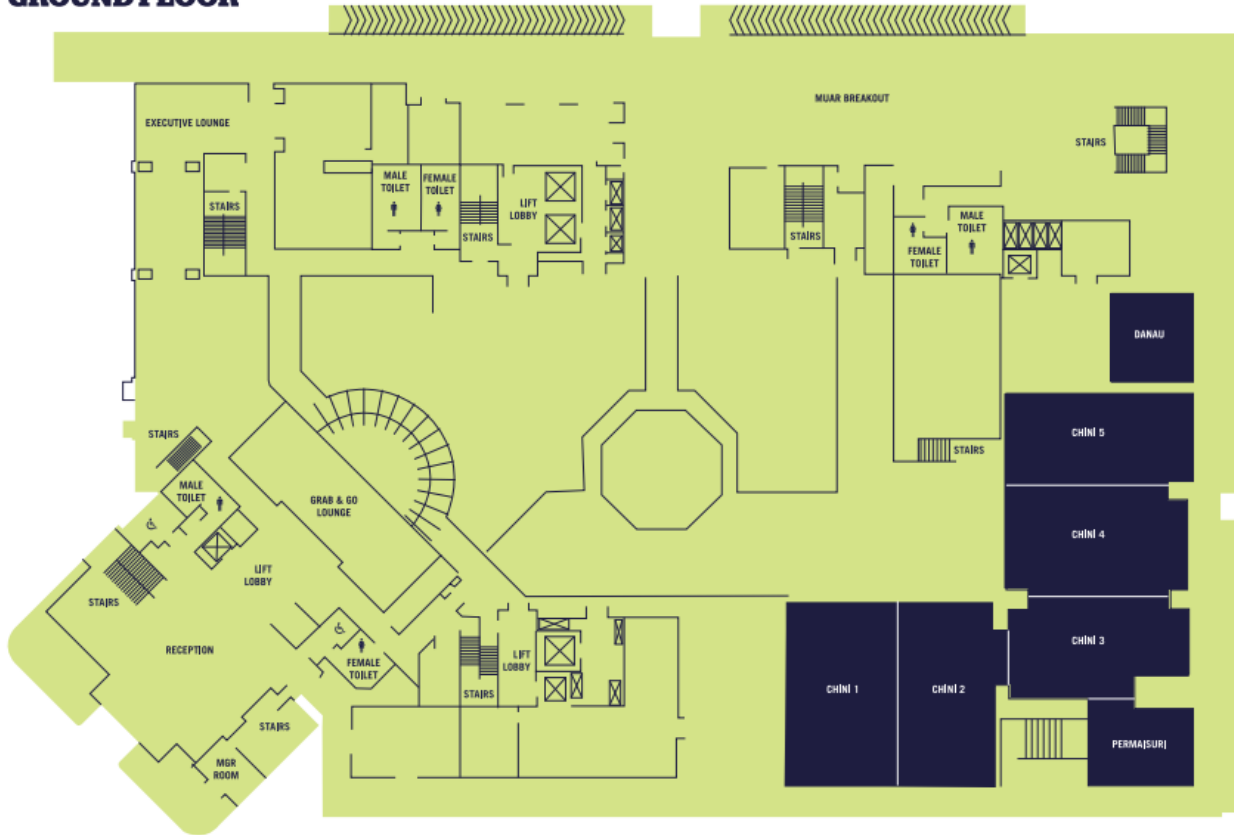


# CAPACITY CHART

Room Name	Total Sq. M	Height (M)	Theatre	Classroom	U-Shape	Cluster	Boardroom	Dinner & Dance	Cocktail Reception
Kenyir Grand Ballroom	664	9.9	800	240	102	300	86	360	450
Kenyir Ballroom 1	350	9.9	200	120	54	112	44	140	150
Kenyir Ballroom 2	312	9.9	200	120	51	112	38	140	150
Ballroom Foyer	283	3.6	-	-	-	-	-	-	100
Chini 1	123	3.4	80	45	36	48	32	50	70
Chini 2	123	3.4	60	45	36	48	32	50	70
Chini 1 & 2	247	3.4	120	90	42	96	38	100	140
Chini 3	108	3.4	85	30	27	32	26	40	50
Permaisuri	44	3.4	-	-	-	-	20	-	-
Chini 4	115	3.4	60	45	36	48	32	50	70
Chini 5	100	3.4	60	45	36	48	32	50	70
Chini 4 & 5	215	3.4	140	90	42	96	38	100	140
Chini 3, 4 & 5	323	3.4	180	120	60	128	56	160	180
Chini 1/2/3/4/5	570	3.4	-	-	-	-	-	240	300
Danau	40	3.4	20	12	9	8	8	10	15
Muar	102	3.6	-	-	-	-	-	-	80
Perdana 1	63	3.4	40	18	21	24	18	30	35
Perdana 2	95	3.4	50	36	24	40	20	50	60
Perdana 3	85	3.4	50	36	24	40	20	50	60
Perdana 4	65	3.4	40	18	21	32	20	40	45
Puteri 1	58	3.4	40	27	12	24	12	30	40
Puteri 2	85	3.4	50	36	21	40	20	50	60
Puteri 3	80	3.4	50	18	21	40	20	50	60
Kinta	240	3.4	-	-	-	-	-	-	50
Bera 1	104	3.4	50	42	20	40	18	50	60
Bera 2	104	3.4	50	36	20	40	18	50	60
Bera 1 & 2	207	3.4	120	72	42	80	38	100	120
Melati 1	50	3.4	30	18	15	16	14	20	30
Melati 2	30	3.4	-	-	-	-	8	-	-
Titiwangsa 1	150	3.7	90	72	48	80	44	100	120
Titiwangsa 2	133	3.7	70	40	27	48	26	60	80
Temenggor (Open Air)	900	8.2	600	180	93	272	80	340	360

# FLOORPLAN - GROUND FLOOR

## WING 1 GROUND FLOOR

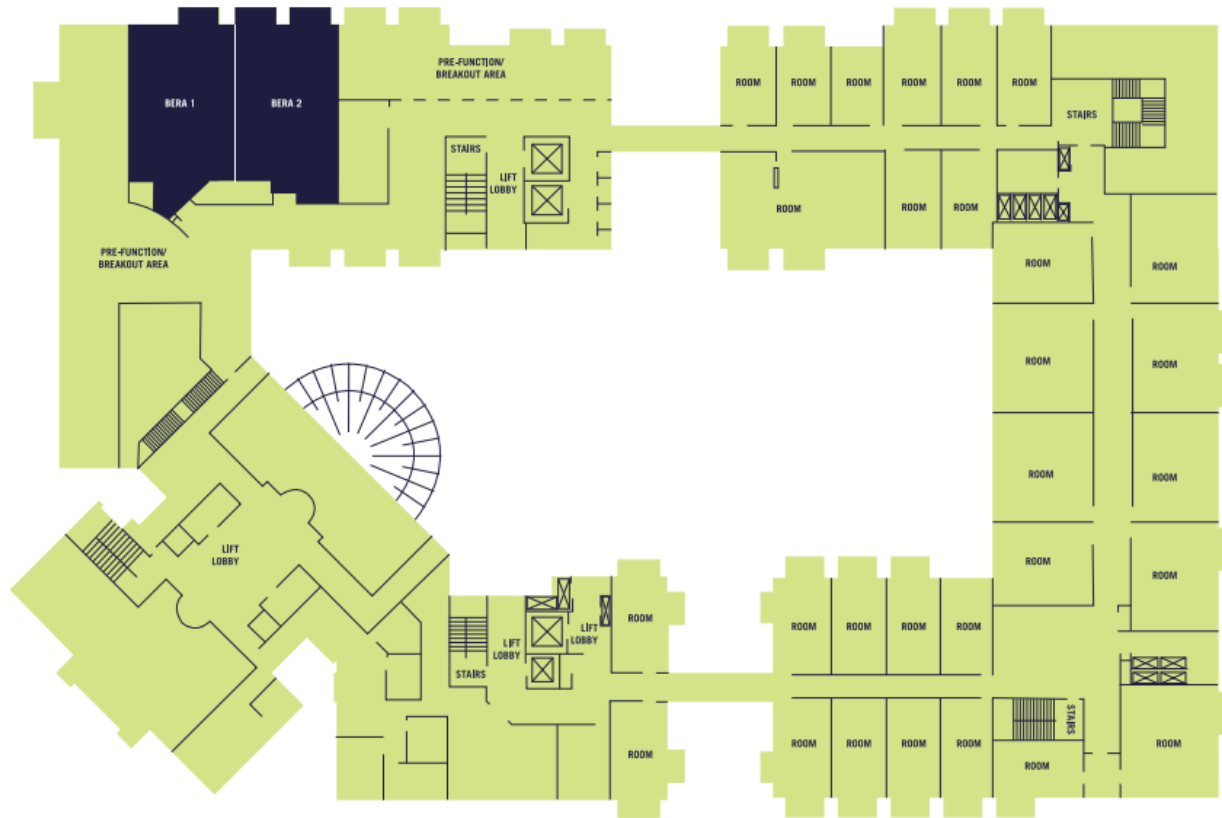


## WING 2 GROUND FLOOR

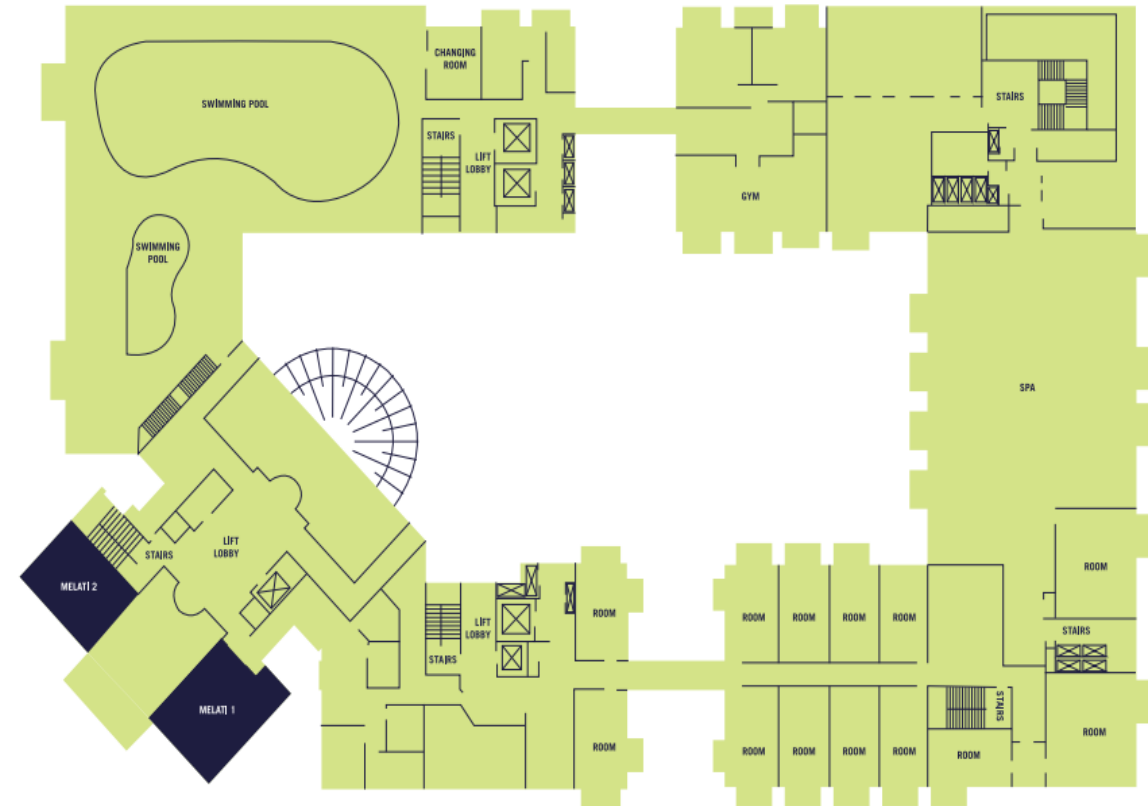


# FLOORPLAN - WING 1

## WING 1 FIRST FLOOR

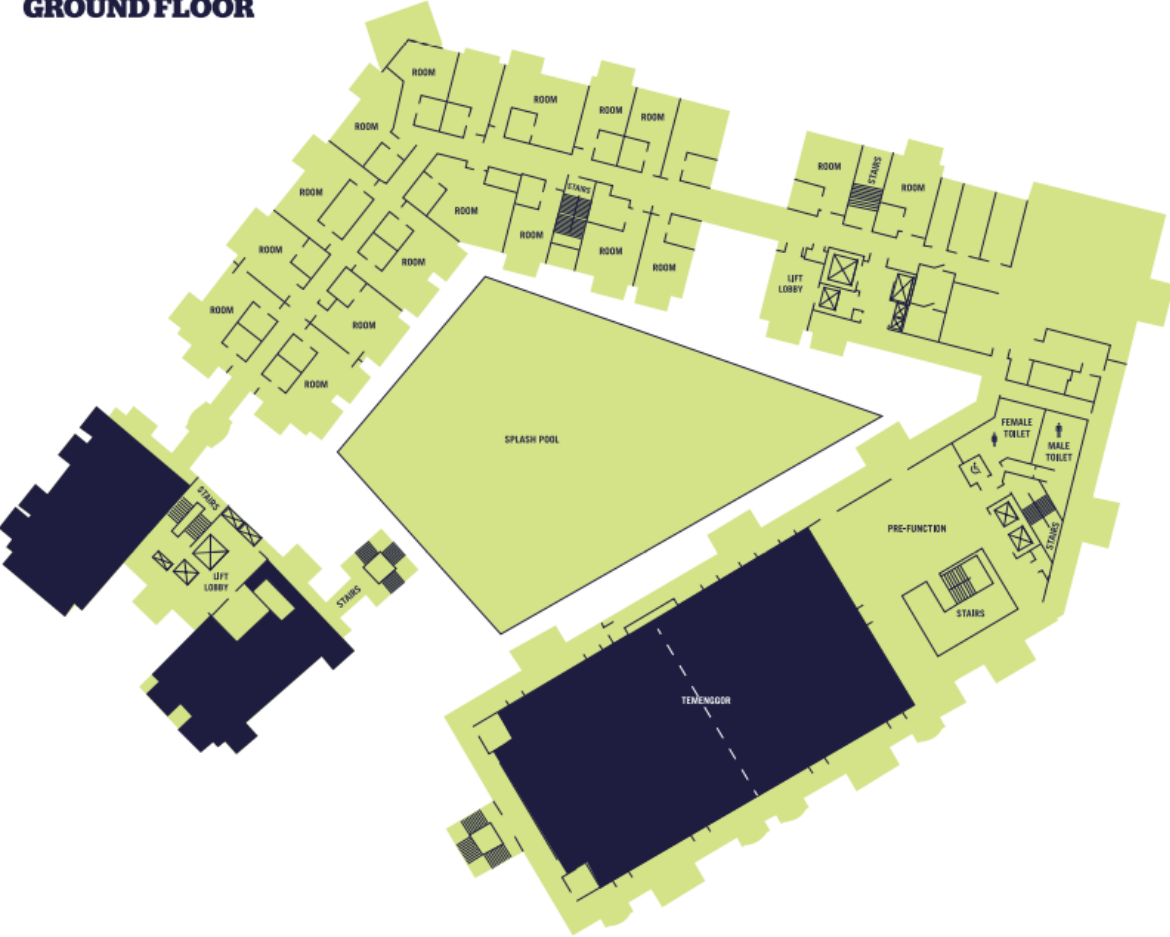


## WING 1 SECOND FLOOR

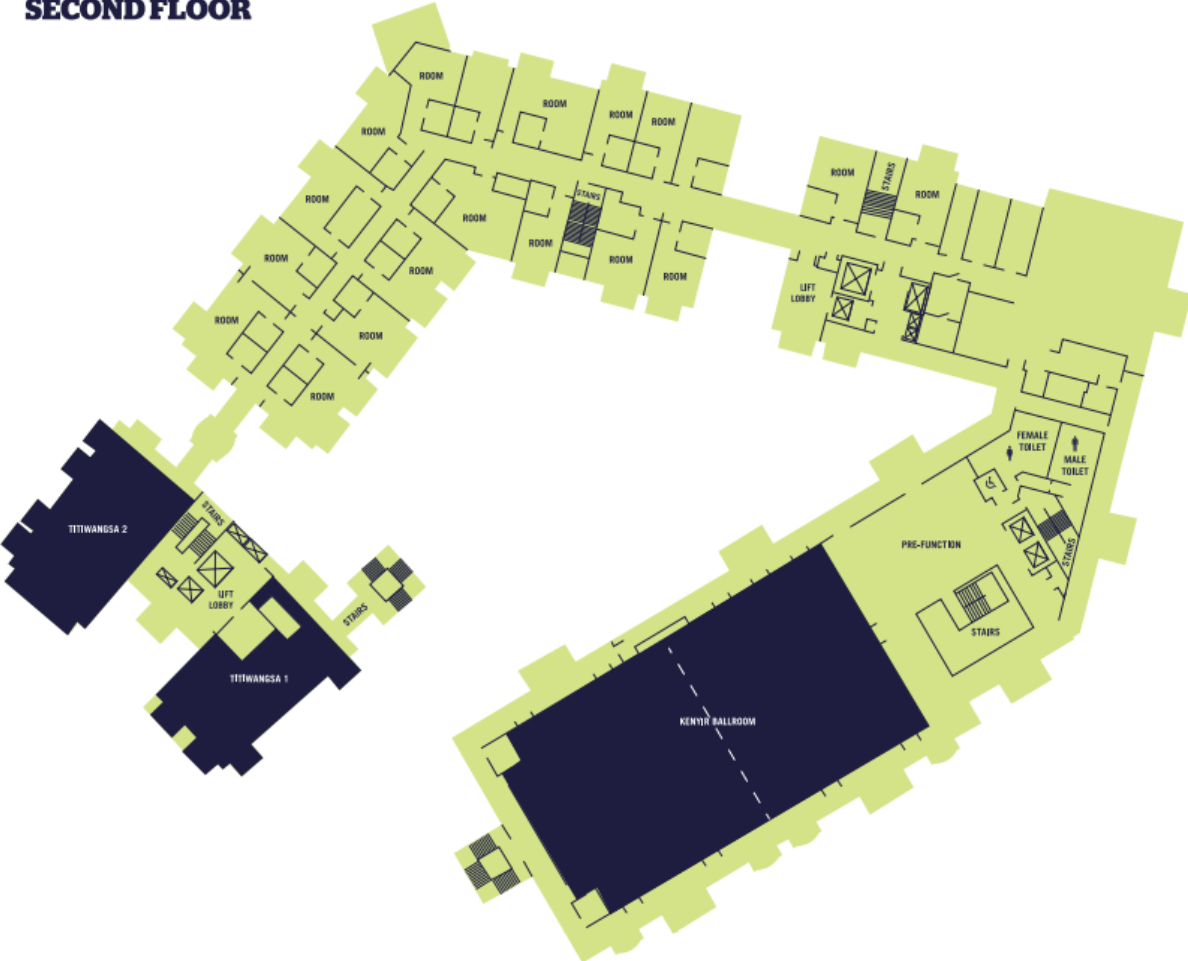


# FLOORPLAN - WING 5

**WING 5  
GROUND FLOOR**



**WING 5  
SECOND FLOOR**



# TEAMWORK MAKES THE DREAM WORK!

Advance your team and take them to the next level through our team building packages, guide your team in developing the right teamwork skills through challenging yet fun activities.



## Water Sports Package

**Choose between Kayaking or Boat Race.**  
*(Includes a trainer, water safety & water confident module, refreshments and Certificate of Fitness)*



## Beat the Box Challenge

Work as a team to think out of the box and solve problems as you unravel a mystery in the Metal Box.  
A fun and interactive indoor activity with refreshments!



## Black Box Cook-off Challenge

Who is the Master Chef among us all?  
Let this cook-off decide!  
*Includes fresh, sustainable ingredients, cooking utensils, induction stove, chef hat and apron! Package also includes a Certificate of Success and refreshments.*



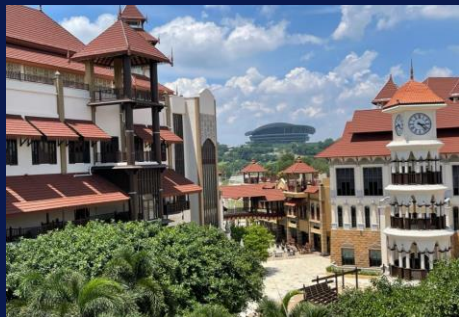
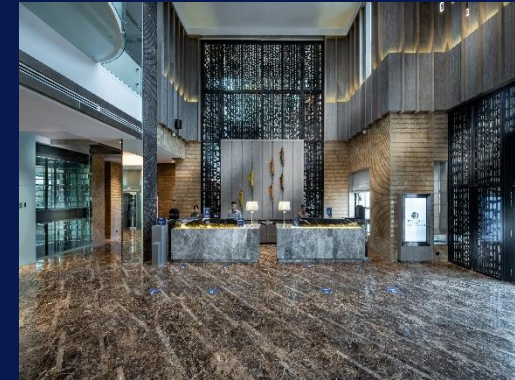
## CSR Team Building

Let's do our part as a team and give back to the society through our Corporate Social Responsibility activities! Pick ONE from:

- Soap For Hope**
- Mangrove Planting**
- Putrajaya Lake Cleaning**
- Teaching Kids To Care**

# SAMPLE ITINERARY

2D 1N	ITINERARY
DAY 1	Arrival at DoubleTree by Hilton Putrajaya Lakeside
	Check In / Lunch at Makan Kitchen
	Meeting / Team building BBQ Dinner at Temenggor
DAY 2	Morning Exercise : Cycling in Putrajaya
	Breakfast at Makan Kitchen Free & Easy and Check Out



3D 2N	ITINERARY
DAY 1	Arrival at DoubleTree by Hilton Putrajaya Lakeside
	Lunch at Makan Kitchen
	Free & Easy (Hotel Tour or Putrajaya City Tour) Evening Reception at Tasek
DAY 2	Morning Exercise at Putrajaya Jogging Track
	Breakfast at Makan Kitchen
	Meeting / Team building Lunch at Makan Kitchen BBQ Dinner at Temenggor
DAY 3	Breakfast at Makan Kitchen
	Free & Easy and Check Out

# CONTACT DETAILS

Ms Farah Hakim  
Commercial Manager

+603 8890 0004

[Farah.Hakim@Hilton.com](mailto:Farah.Hakim@Hilton.com)

Ms Carr-men Kang  
Director of Sales

+603 8890 0005

[Carr-men.Kang@hilton.com](mailto:Carr-men.Kang@hilton.com)

Group, Meetings & Events

[KULPR\\_CB@Hilton.com](mailto:KULPR_CB@Hilton.com)

**CLICK HERE**

[HOTEL VIRTUAL TOUR LINK](#)



**THANK YOU**